

# A PARENT TUTORIAL » UNDERSTANDING 2015-16 PSAT™ 8/9 RESULTS

## A Case Study: Ima B. Student's PSAT 8/9™ Score Report

Take a look at Ima B. Student's Sample Score Report below and on the next page. Use the corresponding information to help you interpret your student's PSAT 8/9 Score Report.

### What Are Ima's Scores?

Ima's Evidence-Based Reading and Writing score is 360 and Math is 420. In Evidence-Based Reading and Writing, Ima's score exceeds the benchmark, and she is on track for college readiness. In Math Ima is close to meeting the benchmark. Test scores, cross-test scores, and subscores can give Ima a better understanding of areas to work on.

### What Are Her Score Percentiles?

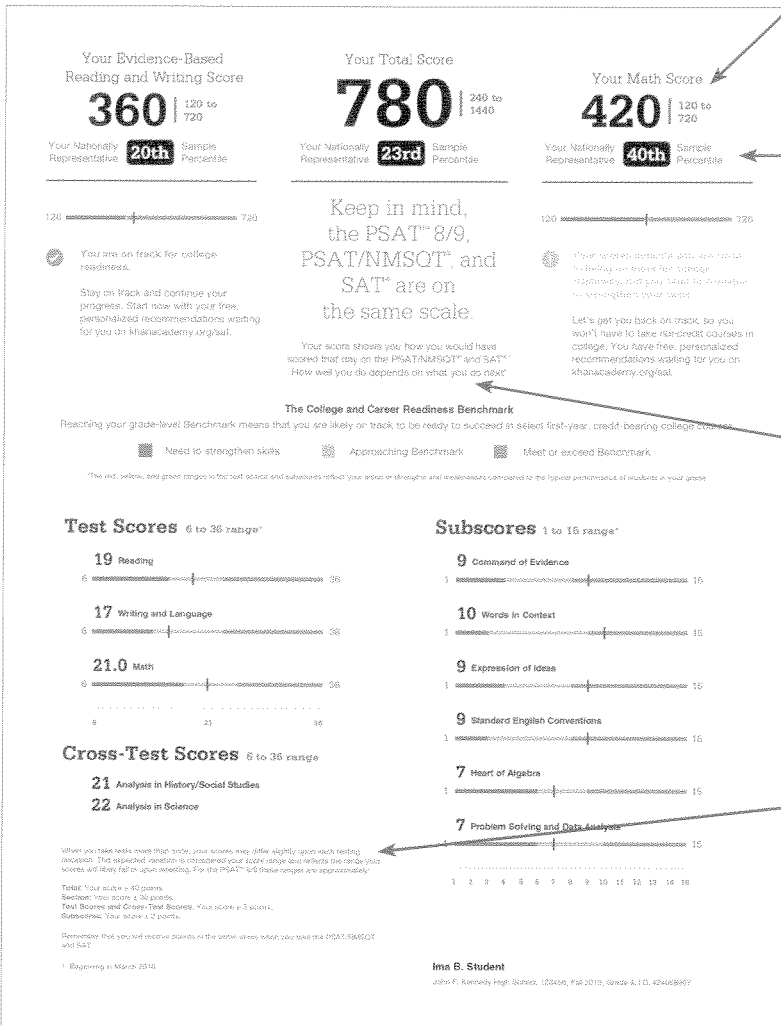
Since Ima is in the 9th grade, the percentiles compare her scores with those of all 9th-graders in the nation. Ima scored as well or better than 23 percent of a nationally representative group of 9th-grade students. In Math, she scored as well or better than 40 percent of a nationally representative group of freshmen. Additional percentiles are available in Ima's online score report.

### How Will Ima Do on the SAT®?

The PSAT 8/9, PSAT/NMSQT®, and SAT are scored on a common scale, therefore if Ima had taken the SAT instead of the PSAT 8/9 on the same test date, she would have received the same score. By the time Ima takes the SAT, she will likely have had additional learning from school and practice. Her PSAT 8/9 results can help Ima focus her efforts in high school to be better prepared for the SAT.

### What Are Her Score Ranges?

No test measures precisely what someone knows, and many factors can affect results. That is why test makers think of each score as a range that extends from a few points below to a few points above the score earned.



### Your Scores: Next Steps

Your score indicates that you are already likely able to:

**Reading Test**  
19  
6 to 30

Improve your skills by focusing on your ability to:

Retain or add information or ideas to a piece of text to support claims or points in challenging text.  
Use a variety of sentence structures to accomplish a rhetorical purpose such as persuading an audience.  
Revise text as needed to improve the accuracy or content appropriateness of your choices within challenging texts.  
Retain or add information or ideas to a piece of text to support claims or points in challenging text.  
Use a variety of sentence structures to accomplish a rhetorical purpose such as persuading an audience.

**Writing and Language Test**  
17  
6 to 36

Draw reasonable inferences and logical conclusions from challenging text.  
Analyze information presented qualitatively in such forms as graphs, tables, and charts and relate this information to information presented in a written challenging text.  
Determine how the selection of specific words, phrases, and sentences in a challenging passage.  
Use a variety of sentence structures to accomplish a rhetorical purpose such as persuading an audience.  
Retain or add information or ideas to a piece of text to support claims or points in challenging text.

**Math Test**  
21.0  
9 to 39

Determine how a graph may be affected by a change in its equation.  
Determine the value of a constant or coefficient in an equation with no solution or infinitely many solutions.  
Using a scientific model, make a prediction and compare the predicted values with the actual values in the case set.  
Within a context, compare the changes in separate data sets with different trends.  
Determine whether two events are independent given their probabilities.  
Use a variety of sentence structures to accomplish a rhetorical purpose such as persuading an audience.

Get more next steps online  
[studentscores.collegeboard.org](http://studentscores.collegeboard.org)

Free Practice: Practice the skills you'll need for high school and beyond - free online on [khanacademy.org](http://khanacademy.org)

Core Course Work: Use your results to create a core course work plan in high school

Explore: Begin to explore careers that might interest you - link directly from your online score report

## How Can Ima Improve Her Academic Skills?

Your Scores: Next Steps are based on her test scores, and the general skills that similarly performing students understand. Ima can see which skills she performed well on and which she needs to improve. Ima can log in to the full report online to see additional skills and improvement steps. (Note that she must be at least 13 years old to do so.) Ima can also link her account to Khan Academy® for personalized practice recommendations.

## What Are Ima's Next Steps?

Under *Get more next steps online*, Ima is directed to [studentscores.collegeboard.org](http://studentscores.collegeboard.org) to learn how to prepare for the SAT with Khan Academy and use her results to create a challenging course work plan in high school.

Score Report (Page 2 of 3)

## How Can Ima Measure Her Progress?

When she becomes a sophomore, Ima can take the PSAT/NMSQT or the PSAT™ 10 to measure the progress she's made since she took the PSAT 8/9. She can take advantage of practice resources by visiting [studentscores.collegeboard.org](http://studentscores.collegeboard.org).

## What Can We Learn from Ima's Answers?

The score report is designed to help students see how they performed by showing the skill areas covered (subscore and cross-test score), and whether the answer was correct, incorrect, or omitted.

### Your Question-Level Feedback

| Subscore | Cross-Test Score | Writing and Language |             |                |          | Math Test - Calculator |             |                |          | Math Test - No Calculator |             |                |          |
|----------|------------------|----------------------|-------------|----------------|----------|------------------------|-------------|----------------|----------|---------------------------|-------------|----------------|----------|
|          |                  | Questions #          | Your Answer | Correct Answer | Subscore | Questions #            | Your Answer | Correct Answer | Subscore | Questions #               | Your Answer | Correct Answer | Subscore |
| 1        | 100              | 1                    | ✓           | W              | 100      | 1                      | ✓           | W              | 100      | 1                         | ✓           | W              | 100      |
| 2        | 100              | 2                    | ✓           | W              | 100      | 2                      | ✓           | W              | 100      | 2                         | ✓           | W              | 100      |
| 3        | 100              | 3                    | ✓           | W              | 100      | 3                      | ✓           | W              | 100      | 3                         | ✓           | W              | 100      |
| 4        | 100              | 4                    | ✓           | W              | 100      | 4                      | ✓           | W              | 100      | 4                         | ✓           | W              | 100      |
| 5        | 100              | 5                    | ✓           | W              | 100      | 5                      | ✓           | W              | 100      | 5                         | ✓           | W              | 100      |
| 6        | 100              | 6                    | ✓           | W              | 100      | 6                      | ✓           | W              | 100      | 6                         | ✓           | W              | 100      |
| 7        | 100              | 7                    | ✓           | W              | 100      | 7                      | ✓           | W              | 100      | 7                         | ✓           | W              | 100      |
| 8        | 100              | 8                    | ✓           | W              | 100      | 8                      | ✓           | W              | 100      | 8                         | ✓           | W              | 100      |
| 9        | 100              | 9                    | ✓           | W              | 100      | 9                      | ✓           | W              | 100      | 9                         | ✓           | W              | 100      |
| 10       | 100              | 10                   | ✓           | W              | 100      | 10                     | ✓           | W              | 100      | 10                        | ✓           | W              | 100      |
| 11       | 100              | 11                   | ✓           | W              | 100      | 11                     | ✓           | W              | 100      | 11                        | ✓           | W              | 100      |
| 12       | 100              | 12                   | ✓           | W              | 100      | 12                     | ✓           | W              | 100      | 12                        | ✓           | W              | 100      |
| 13       | 100              | 13                   | ✓           | W              | 100      | 13                     | ✓           | W              | 100      | 13                        | ✓           | W              | 100      |
| 14       | 100              | 14                   | ✓           | W              | 100      | 14                     | ✓           | W              | 100      | 14                        | ✓           | W              | 100      |
| 15       | 100              | 15                   | ✓           | W              | 100      | 15                     | ✓           | W              | 100      | 15                        | ✓           | W              | 100      |
| 16       | 100              | 16                   | ✓           | W              | 100      | 16                     | ✓           | W              | 100      | 16                        | ✓           | W              | 100      |
| 17       | 100              | 17                   | ✓           | W              | 100      | 17                     | ✓           | W              | 100      | 17                        | ✓           | W              | 100      |
| 18       | 100              | 18                   | ✓           | W              | 100      | 18                     | ✓           | W              | 100      | 18                        | ✓           | W              | 100      |
| 19       | 100              | 19                   | ✓           | W              | 100      | 19                     | ✓           | W              | 100      | 19                        | ✓           | W              | 100      |
| 20       | 100              | 20                   | ✓           | W              | 100      | 20                     | ✓           | W              | 100      | 20                        | ✓           | W              | 100      |
| 21       | 100              | 21                   | ✓           | W              | 100      | 21                     | ✓           | W              | 100      | 21                        | ✓           | W              | 100      |
| 22       | 100              | 22                   | ✓           | W              | 100      | 22                     | ✓           | W              | 100      | 22                        | ✓           | W              | 100      |
| 23       | 100              | 23                   | ✓           | W              | 100      | 23                     | ✓           | W              | 100      | 23                        | ✓           | W              | 100      |
| 24       | 100              | 24                   | ✓           | W              | 100      | 24                     | ✓           | W              | 100      | 24                        | ✓           | W              | 100      |
| 25       | 100              | 25                   | ✓           | W              | 100      | 25                     | ✓           | W              | 100      | 25                        | ✓           | W              | 100      |
| 26       | 100              | 26                   | ✓           | W              | 100      | 26                     | ✓           | W              | 100      | 26                        | ✓           | W              | 100      |
| 27       | 100              | 27                   | ✓           | W              | 100      | 27                     | ✓           | W              | 100      | 27                        | ✓           | W              | 100      |
| 28       | 100              | 28                   | ✓           | W              | 100      | 28                     | ✓           | W              | 100      | 28                        | ✓           | W              | 100      |
| 29       | 100              | 29                   | ✓           | W              | 100      | 29                     | ✓           | W              | 100      | 29                        | ✓           | W              | 100      |
| 30       | 100              | 30                   | ✓           | W              | 100      | 30                     | ✓           | W              | 100      | 30                        | ✓           | W              | 100      |
| 31       | 100              | 31                   | ✓           | W              | 100      | 31                     | ✓           | W              | 100      | 31                        | ✓           | W              | 100      |
| 32       | 100              | 32                   | ✓           | W              | 100      | 32                     | ✓           | W              | 100      | 32                        | ✓           | W              | 100      |
| 33       | 100              | 33                   | ✓           | W              | 100      | 33                     | ✓           | W              | 100      | 33                        | ✓           | W              | 100      |
| 34       | 100              | 34                   | ✓           | W              | 100      | 34                     | ✓           | W              | 100      | 34                        | ✓           | W              | 100      |
| 35       | 100              | 35                   | ✓           | W              | 100      | 35                     | ✓           | W              | 100      | 35                        | ✓           | W              | 100      |
| 36       | 100              | 36                   | ✓           | W              | 100      | 36                     | ✓           | W              | 100      | 36                        | ✓           | W              | 100      |
| 37       | 100              | 37                   | ✓           | W              | 100      | 37                     | ✓           | W              | 100      | 37                        | ✓           | W              | 100      |
| 38       | 100              | 38                   | ✓           | W              | 100      | 38                     | ✓           | W              | 100      | 38                        | ✓           | W              | 100      |
| 39       | 100              | 39                   | ✓           | W              | 100      | 39                     | ✓           | W              | 100      | 39                        | ✓           | W              | 100      |
| 40       | 100              | 40                   | ✓           | W              | 100      | 40                     | ✓           | W              | 100      | 40                        | ✓           | W              | 100      |
| 41       | 100              | 41                   | ✓           | W              | 100      | 41                     | ✓           | W              | 100      | 41                        | ✓           | W              | 100      |
| 42       | 100              | 42                   | ✓           | W              | 100      | 42                     | ✓           | W              | 100      | 42                        | ✓           | W              | 100      |

Get your full report online  
[studentscores.collegeboard.org](http://studentscores.collegeboard.org)

© 2015 The College Board. College Board, SAT, and the acorn logo are registered trademarks of the College Board. PSAT is a trademark owned by the College Board. PSAT/NMSQT is a registered trademark of the College Board and National Merit Scholarship Corporation. Khan Academy is a registered trademark in the United States and other jurisdictions.

Score Report (Page 3 of 3)